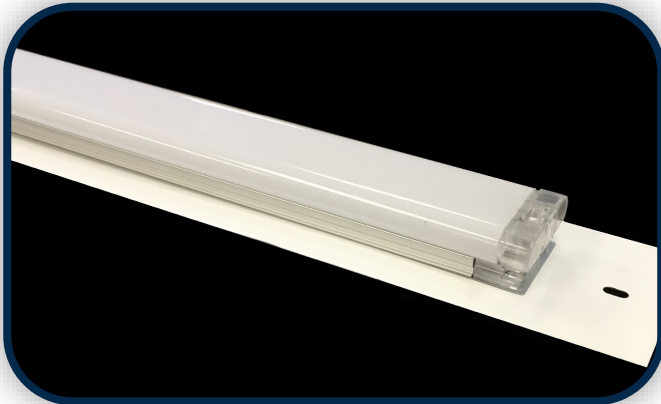




high school classrooms retrofit



"School district will save 50 % in lighting costs by retrofitting it's existing direct/indirect fluorescents."

location: everett , ma
description: 2241- 28wt led direct/ indirect

The Situation:

Everett HS was built in 2007 with T8 lamps and ballasts. The existing fluorescent system was coming to its end of useful life and Everett Unified School District was planning on spending maintenance funds to re-lamp and re-ballast an entire 5 story high school. The existing light fixtures were only eight years old so the school district did not want to remove expensive architectural direct/ indirect luminaires. The school district considered keeping the existing fluorescent lighting system, but they were drawn to LED BAR because of the dramatic reduction in operating cost will allow funds to be spent in other critical areas that were not in budget.

The Solution:

FSC Lighting's L-BAR replaced the linear T8 fluorescent fixtures in classrooms slashing the operating cost of their entire campus while providing a much improved learning environment . By retrofitting two lamp fluorescent lamps with FSC's 28 watt L-BAR Strip, the campus will use 308,000 fewer kilowatt hours (kWh) per year, an annual savings of approximately \$43,120. The long life of the L-Bar system will also contribute to significant reduction in maintenance costs by nearly eliminating the staggering expense of re-lamping. The District also found that by using LED lighting, they could provide twice the minimum light level allowed and still save energy. Switching to L-BAR not only was a more sustainable solution, it was also more aesthetically pleasing; they were able to achieve a more uniform illumination and color consistency throughout. Maintenance installed lamps that they had on hand, which was not always the correct color temperature when spot re-lamping. "Without the FSC Lighting LED Light Bar, we would have never been able to complete this retrofit project on time. All other solutions would have required the removal of the existing direct/indirect and the installation of a new and more expensive fixture." - ECI (Lighting Contractor).

	EXISTING	REPLACEMENT
TECHNOLOGY	Fluorescent	LED
SYSTEM	2 Lamp T8 Fixture	LED Bar
TOTAL SYSTEM ENERGY USAGE (watts)	59	28
CONTROLS	None	Auto Demand Response Ready
TOTAL ANNUAL kwh	616,000	308,000

RESULTS:

ANNUAL ENERGY SAVINGS:

308,000kWh

ANNUAL ENERGY COST SAVINGS:

\$43,120



For more information about the L-BAR and more FSC LED products call 909-948-8878