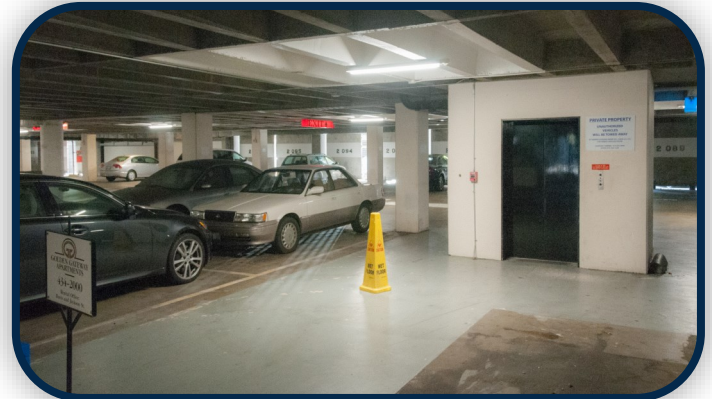




parking garage II

step dimming lighting control strategy



"Parking Structure will save 200,358(kWh) in lighting by retrofitting it's existing fluorescent strips."

subject: apartment parking garage
location: san francisco, ca
description: 240- 25wt l-bar strips

The Situation:

High end apartment complex in San Francisco, California, looking to reduce energy usage and the staggering maintenance costs of re-lamping T5HO fluorescents, upgrades its existing strips to a more efficient LED solution. Low maintenance costs, long useful life and good light quality peaked management interest to this state-of-the-art LED Technology.

The Solution:

FSC Lighting's L8500 Series Strip Fixture replaced the 117-watt fluorescent strips throughout the parking garage, dropping lighting costs by 82%. Following the replacement of 117-watt fluorescent lamps with FSC's 28 watt L8500 Series strip, this major parking operator was able to use 200,358 fewer kilowatt hours (kWh) per year, savings of approximately \$32,057 annually based on \$.16 kWh rate and 24 hours operation a day. The fixture also step-dims the L-BAR to 25% of full light output for approximately 30% of the day.

	EXISTING	REPLACEMENT
TECHNOLOGY	Fluorescent	LED
SYSTEM	2 Lamp T5HO Strip Fixture	LED Bar Strip Fixture
TOTAL SYSTEM ENERGY USAGE (watts)	117	28
CONTROLS	None	Auto Demand Response Ready Occupancy Sensor Step Dimming
TOTAL ANNUAL kwh	245,980	45,621

RESULTS:

ANNUAL ENERGY SAVINGS:

200,358Wh

ANNUAL ENERGY COST SAVINGS:

\$32,057

Powered by:



For more information about the L8500 Series Strip and more FSC LED products call 909-948-8878