

## Metropolis

Los Angeles, CA



## Stairwells– New Construction

### The Customer

Metropolis is located in the cultural heart of Los Angeles, moments from L.A. Live, STAPLES Center, and the Arts and Financial Districts. The residences at Metropolis feature thoughtful, contemporary design and glass window walls framing far-reaching city and mountain views.

### The Situation

The client needed a customized lighting solution for their stairwells; a radial wraparound equipped with a bracket that would help secure the fixture onto the concrete walls. In addition to the custom modification required by the contractor, the customer required an energy efficient solution that was not only cost effective but aesthetically complementary to the contemporary theme used throughout the compound. Another important consideration was providing bright, secure light when the stairwell is occupied while saving energy when the area was not in use.

### The Solution

FSC Lighting specified and modified the L6000 Series LED Radial Wrap in both towers (38 and 40 stories). The clean, bright light from these fixtures would provide safety and security throughout. To maximize energy efficiency and ensure ease of use, the fixtures were equipped with programmable occupancy sensors with dimming capabilities .

Going beyond efficiency is our top priority, we didn't just develop and install a brand-new lighting solution for Metropolis – we went out of our way to ensure the entire process was seamless and affordable. Here's how:

- **Specification:** Collaborated with the electrical engineering firm to help specify the project – and held the spec throughout.
- **Prefabrication:** The project had its own unique mounting requirements. FSC was able fabricate a unique wall mounting bracket enabling the product to be easily installed, saving the contractor countless hours.
- **Intelligent Lighting Controls:** Dimmable/programmable sensors for occupancy detection, means lights are in night-light mode in areas of the structure not occupied for additional energy savings.

*" Parking structure will save on lighting cost by selecting L6000 fixture with an occupancy sensor dimmed at 50% while area is unoccupied."*



### L6000 Series LED Radial Wrap Features:

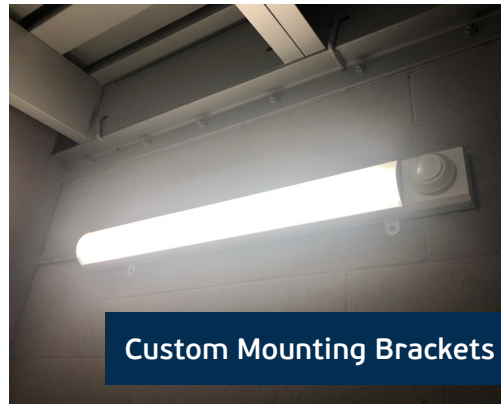
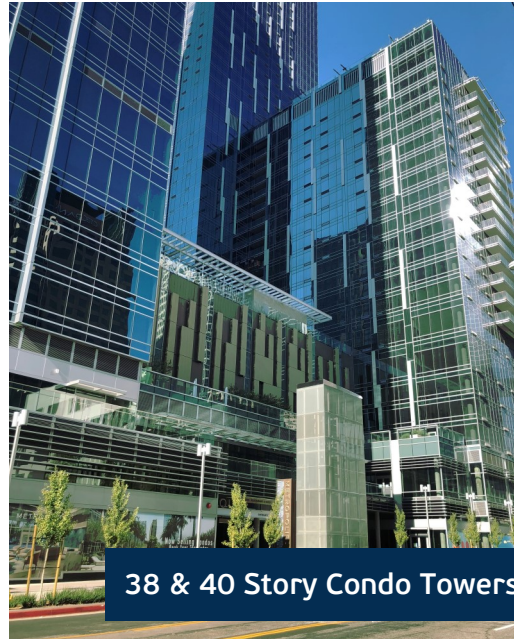
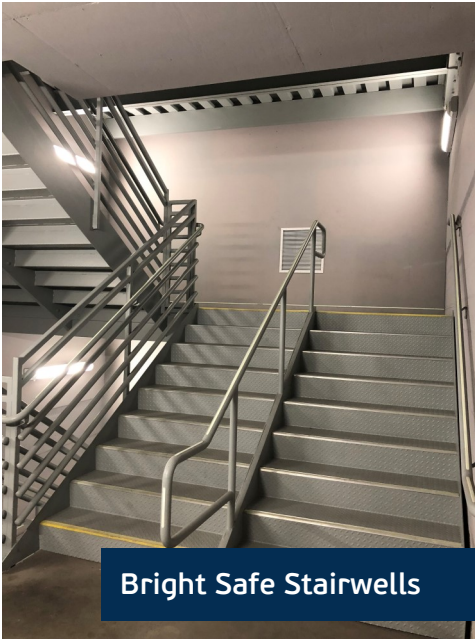
- Projected L70: 398,000 hours
- Sensors can be integrated for additional energy savings
- Energy efficient – up to 90% savings over current energy/lighting costs
- ETL and DLC Premium Listed
- 50°C Ambient Temperature Rating
- Low maintenance & energy efficient

### Prefabrication

FSC's goal is to help contractors simplify the installation process, reduce overall project costs, and skip the costly onsite prefabrication process. These services make FSC more valuable to its manufacturer's representatives & distributors as a one shop stop for their new construction and retrofit projects.

## Metropolis

Los Angeles, CA



## Contact Us

Give us a call for more information about our services and products

**FSC Lighting**  
9120 Center Avenue  
Rancho Cucamonga, CA 91730

(800) 255-8990

[alex@fscighting.com](mailto:alex@fscighting.com)

Visit us on the web at  
[www.fscighting.com](http://www.fscighting.com)